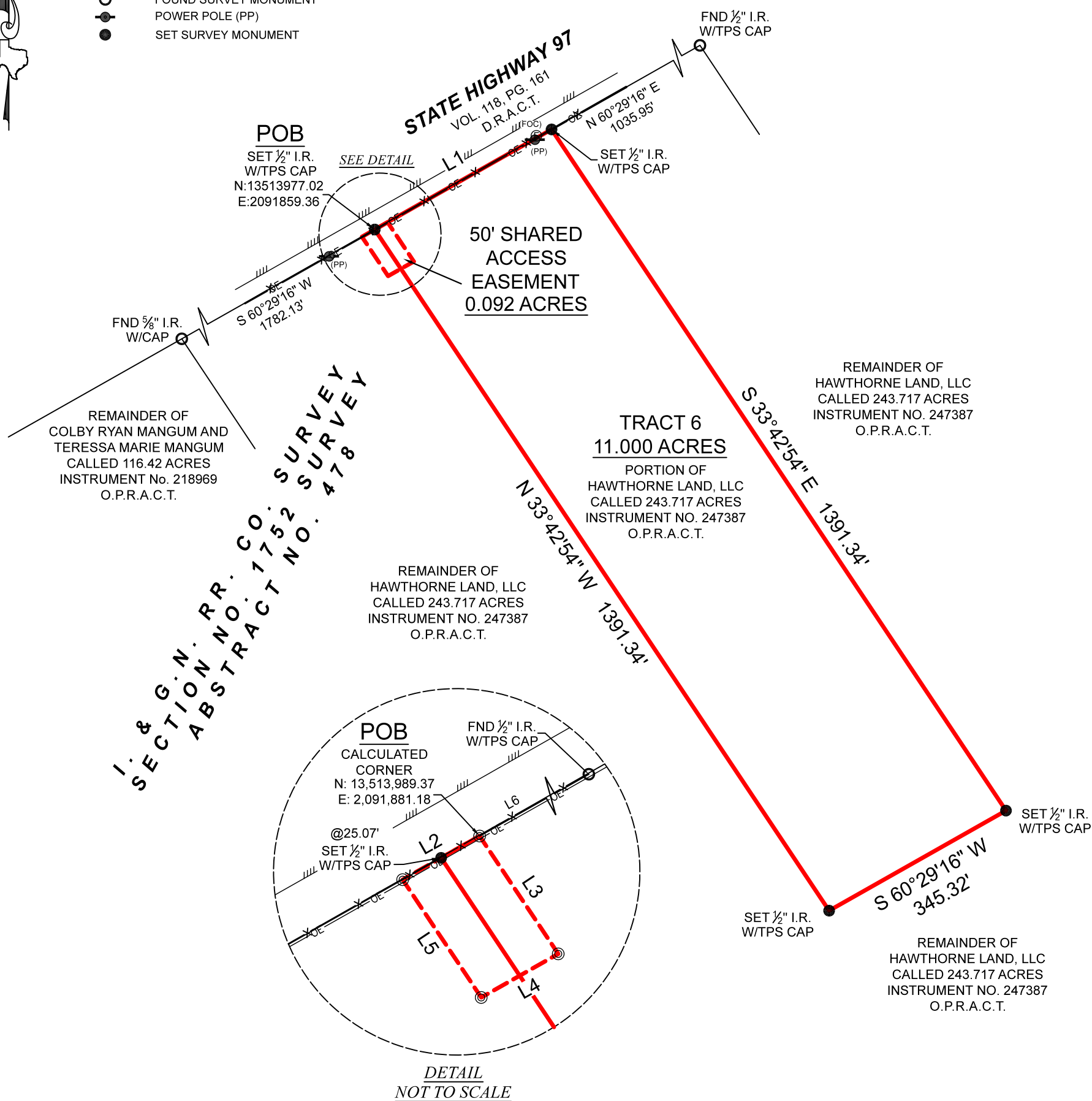




| LINE | BEARING | DISTANCE |
|------|---------------|----------|
| L1 | N 60°29'16" E | 345.32' |
| L2 | N 60°29'16" E | 50.13' |
| L3 | S 33°42'54" E | 80.22' |
| L4 | S 60°29'16" W | 50.13' |
| L5 | N 33°42'54" W | 80.22' |
| L6 | N 60°29'16" E | 1356.20' |

- | | |
|-------|--------------------------------|
| —COM— | COMMUNICATION LINE |
| //// | EDGE OF ASPHALT |
| —OE— | OVERHEAD ELECTRIC |
| —X— | WIRE FENCE |
| Ⓢ | FIBER OPTIC CABLE MARKER (FOC) |
| ◯ | FOUND SURVEY MONUMENT |
| ● | POWER POLE (PP) |
| ● | SET SURVEY MONUMENT |



Thomas A. McIntyre
Registered Professional Land Surveyor No. 6921

