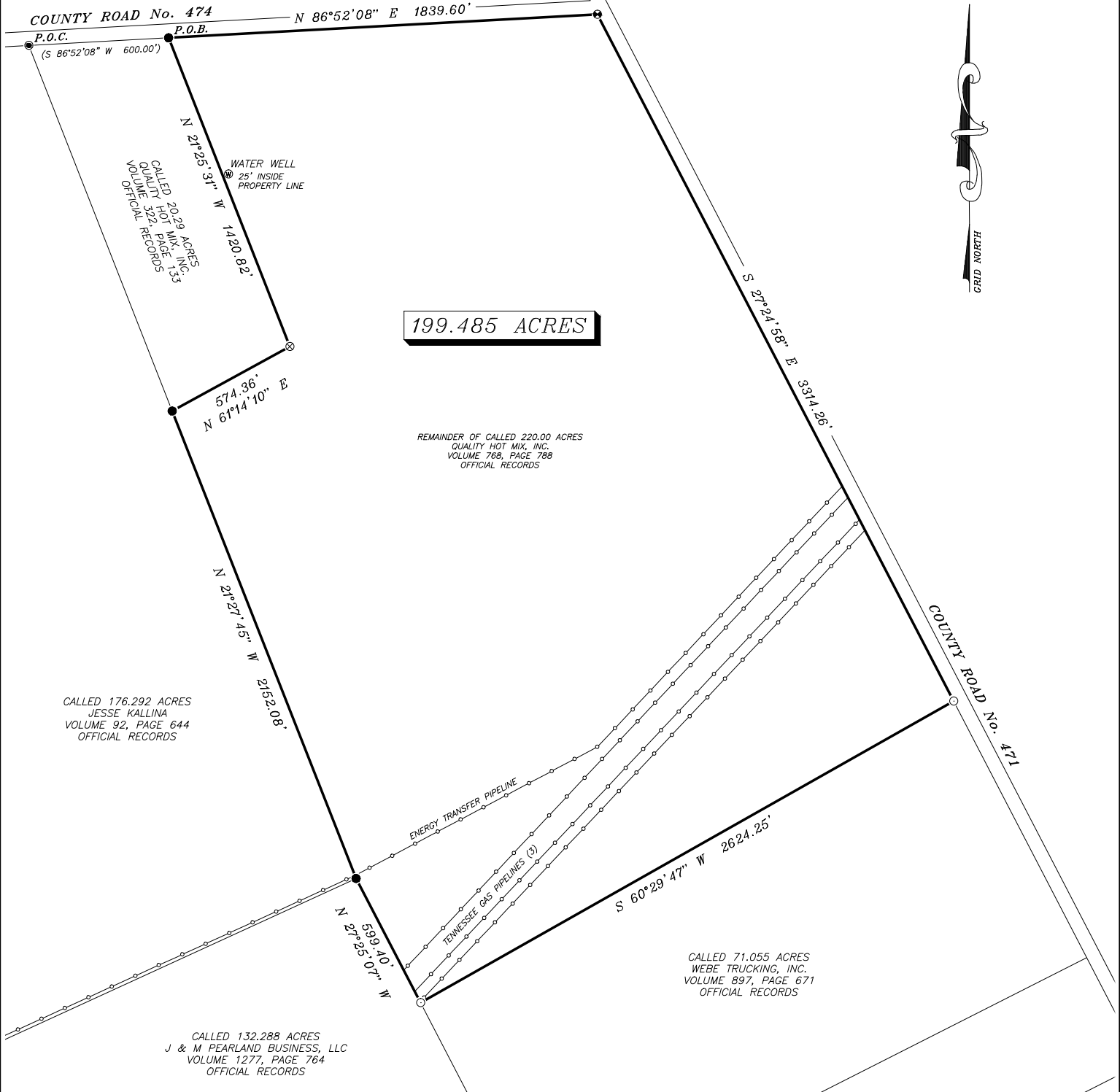


NASARIO MANCHA LEAGUE & LABOR
ABSTRACT No. 271

WILLIAM ROBINSON LEAGUE
ABSTRACT No. 55



SURVEYOR'S NOTES:

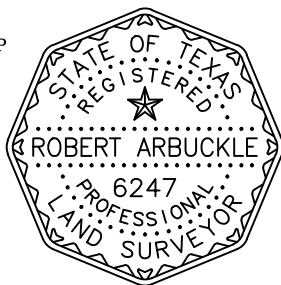
- (1) THIS SURVEY AND THE PROPERTY DESCRIPTION SET FORTH HEREON WAS MADE FOR THE BENEFIT OF AND RELIANCE BY FIDELITY NATIONAL TITLE INSURANCE COMPANY WITH RESPECT TO GF No. 2022-1147.
- (2) BEARINGS ARE BASED ON THE TEXAS STATE PLANE COORDINATE SYSTEM, TEXAS SOUTH-CENTRAL ZONE, NAD83. DISTANCES SHOWN HEREON ARE SURFACE VALUES.
- (3) ALL SET IRON RODS ARE MARKED WITH A PLASTIC CAP STAMPED "RPLS No. 6247" UNLESS OTHERWISE NOTED.
- (4) LEGAL DESCRIPTION TO ACCOMPANY THIS PLAT.

ARBUCKLE SURVEYING, LLC
2004 N. WHARTON ST.
EL CAMPO, TEXAS 77437
PHONE: (979) 543-7974
FIRM REGISTRATION No. 10193819

THE STATE OF TEXAS
COUNTY OF WHARTON

I, ROBERT D. ARBUCKLE, A REGISTERED PROFESSIONAL SURVEYOR IN THE STATE OF TEXAS, DO HEREBY CERTIFY THAT THIS PLAT WAS PREPARED FROM AN ACTUAL SURVEY MADE ON THE GROUND UNDER MY DIRECTION AND SUPERVISION, AND THAT THIS PLAT IS A TRUE AND CORRECT REPRESENTATION OF THE SAME AS I LOCATED ITS COMPONENT PARTS ON THE GROUND THE 15TH DAY OF DECEMBER, 2022.

Robert D. Arbuckle
ROBERT D. ARBUCKLE
REGISTERED PROFESSIONAL LAND SURVEYOR
LICENSE No. 6247



CALLED 30.767 ACRES
JOHN WILSON WEAVER
VOLUME 419, PAGE 437
OFFICIAL RECORDS

DATE:
DECEMBER 28, 2022
FILENAME:
221004.DWG

LEGEND

○	SET 5/8" IRON ROD
●	FOUND 5/8" IRON ROD
⊙	FOUND 1/2" IRON ROD
⊗	SET MAGNETIC NAIL
⊗	FENCE CORNER POST

